

# The Grange Informer

*Learning Our Way To The Future*

## FROM THE PRINCIPAL

Welcome back to all our families! I hope everyone enjoyed the break and are feeling refreshed and ready for a great term 2. We are pleased to see that all children have returned ready to learn and participate in classroom activities. The term calendar is already looking busy!

A big thank you to all the families who attended the TGPS ANZAC Day service on the 30 April. It was wonderful to see such a terrific turn out by all our families at this year's service of remembrance. A special mention must go to Miss Butler and our school leaders, who were involved in hosting a very respectable service.

On Friday 3rd May, the weather was kind to us and students participated in the 3-6 cross country events. It was fantastic to see so many children participating and encouraging others. Thank you to all parents who came to cheer students on. Good luck to all children who will be representing our school at the Zone Cross Country.

## COLLABORATIVE - RESPECTFUL - COMMUNICATION

From time to time parents or other members of the school community may need to approach the school in order to: Discuss the progress or welfare of your own child, Express concern about actions of other students or Enquire about school policy or practice. It is therefore necessary to have procedures in place that will help solve problems as soon as possible so that a safe and harmonious school environment is maintained. As a school, we will not tolerate abusive or threatening conversations or behaviours. These conversations will be concluded promptly and further action will be implemented if required. The best results usually flow from working together in a respectful and courteous manner. *The department sets out a very clear School Community Charter which outlines the responsibilities of parents, carers, educators and school staff in NSW public schools to ensure our learning environments are collaborative, supportive and cohesive. (Please see the School Community Charter on the next page)*

Communication is a critical aspect of ensuring the best possible outcomes for our students. If you ever have any concerns or queries about your child, in the first instance, please contact your child's class teacher. You are always welcome to make an appointment to meet with them or teachers are more than happy to phone you back at a mutually convenient time to discuss any areas of concern. If you are uncertain who to contact or you need further clarification if an issue is not resolved, please contact the Assistant Principal (Mr Seeney, Mrs Whittles or Mrs Anderson) or the Principal for advice on further action.

All information or conversations about incidents that take place in school should be discussed with school staff only. Can I please remind all parents that it is not appropriate to approach other parents and children in the playground about such matters or post negative comments on social media.

## DATES FOR YOUR DIARY

### TERM 2

Every Monday

Parents Social Group 9am-10am

Every Wednesday

Play Group 9.30am-11am

Every Thursday

Uniform shop 8.30am-9.30am

School Banking

Every Friday (week 4, 6 & 8 only)

Community Information Session  
10am



Thursday 9th May (week 2)

P&C Mothers Day Stall

Friday 10th May (week 2)

Whole School Assembly

P&C Meeting 10am

Wednesday 22nd May (week 4)

P&C Pizza Day

Friday 24th May (week 4)

Zone Cross Country

Tuesday 4th June (week 6)

P&C Meeting

Wednesday 5th June (week 6)

P&C Sausage Sizzle

# School Community Charter

 **Collaborative. Respectful. Communication.**

The following School Community Charter outlines the responsibilities of parents, carers, educators and school staff in NSW public schools to ensure our learning environments are collaborative, supportive and cohesive.

## What our schools provide

NSW public schools work to create positive environments for students, staff and the entire school community that support student learning. We strive to ensure that every student is known, valued and cared for.

**The best education happens when parents and schools work together.**

The School Community Charter aligns with the NSW Department of Education Strategic Plan 2018 – 2022.



## Positive environments

It is important that our NSW public schools are positive environments and that parents and carers are kept informed of students' progress and school announcements.

Parents and carers can expect:

- to be welcomed into our schools to work in partnership to promote student learning.
- communication from school staff will be timely, polite and informative.
- professional relationships with school staff are based on transparency, honesty and mutual respect.
- to be treated fairly. Tolerance and understanding are promoted as we respect diversity.

**We treat each other with respect**

**We prioritise the wellbeing of all students and staff**

**Unsafe behaviour** is not acceptable in our schools

**We work together with the school**

**Ensuring respectful learning environments for all members of NSW Public Schools communities.**

© NSW Department of Education



We create  
**collaborative**  
learning  
environments

We  
all play  
**a part**

We work  
**in partnership**  
to promote  
student  
learning

### Communicating with our schools

Our staff will find a time to talk to you when they can give you their full attention. Please remember that while our staff are in class or dealing with other matters, they may not be available to answer your questions immediately.

Our schools and communities will make sure that written communication is appropriate, fair and easy to read. We encourage you to use email and social media appropriately to connect with your school and stay up-to-date with up-coming events in the school community.

Our guide for parents, carers and students provides useful information about the complaints process: [education.nsw.gov.au/about-us/rights-and-accountability/complaints-compliments-and-suggestions/guide-for-parents-carers-and-students](http://education.nsw.gov.au/about-us/rights-and-accountability/complaints-compliments-and-suggestions/guide-for-parents-carers-and-students)

### Respectful communication is a right

In all workplaces people have the right to feel respected. Unacceptable and offensive behaviour has no place in our school communities.

To ensure the wellbeing of students, staff and the community in our schools, steps will be taken to address unacceptable behaviour. This may include restricting contact with the school community or, in more serious cases, referral to NSW Police.



### Unacceptable behaviour may include but is not limited to:

- Aggressive or intimidating actions, such as violence, threatening gestures or physical proximity.
- Aggressive or intimidating language, including the use of obscenities, making sexist, racist or derogatory comments or using a rude tone.
- Treating members of the school community differently due to aspects such as their religion or disability.
- Inappropriate and time wasting communication.



**Collaborative.  
Respectful.  
Communication.**

**School Community Charter**

[education.nsw.gov.au](http://education.nsw.gov.au)

## START RIGHT - For children aged 0-3 years

### Starting Wednesday 8 May, 2019

The Grange Public School are very excited to partner with MDSI who are running a **FREE education program for children aged 0-3 years**. The start right program focus on early years learning, literacy and numeracy. The program will run **every Wednesday morning 9:00am-11:00am** during term time only in the school hall.

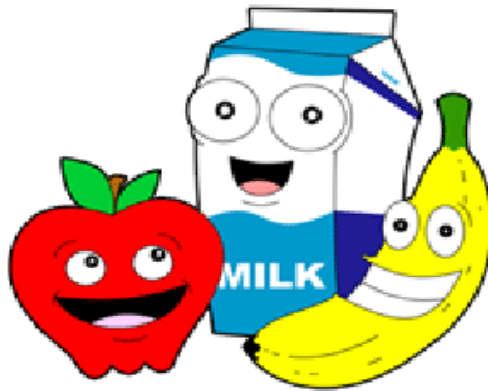
**For further information contact Vanessa Slattery**





## CANTEEN

As you are aware, we are in the process for calling tenders for the school canteen. An advertisement will shortly appear in the Macarthur Advertiser and will be advertised for three weeks.



We thank you for your patience and understanding during this time. The school is endeavouring to provide the school with a healthy canteen facility as soon as possible. Additionally, we thank the P&C who have volunteered to coordinate 4 food days during the canteen closure. This was implemented as a means to support families who were missing our canteen service. Please know that we acknowledge that fundraisers can be expensive and understand families need to participate according to budgets.

## NAPLAN

During **Weeks 3 and 4 in Term 2**, our school will participate in NAPLAN Online. NAPLAN assesses literacy and numeracy – important skills that each child needs to succeed in school and life. The NAPLAN tests are designed to help us make sure students are on track with their literacy and numeracy development. Students in Years 3, 5, 7 and 9 participate in NAPLAN tests for reading, writing, conventions of language (spelling, grammar and punctuation) and numeracy. Students taking part in these assessments are encouraged to do their best and are reminded that there is no ‘pass’ or ‘fail’. NAPLAN results will be made available to parents later in the year.

To see the types of questions and interactive features of NAPLAN Online, visit [the public demonstration site](#).

If you have any questions about NAPLAN Online, please contact your child’s classroom teacher.

*For more info:*

- [How to support your child during NAPLAN](#)
- [Information for parents and carers](#)
- [Watch a video that explains NAPLAN Online](#)
- [Subscribe to ACARA's monthly parent newsletter, Parent Update](#)

## SCHOOL REPORTS

As part of the reporting to parent's policy, schools need to provide parents/carers with a written report on their child's learning twice per year. The components of the written report have to meet the Policy Standards which includes addressing each learning area in each year of schooling. In Primary schools, the six Key Learning Areas (KLA) are: Creative Arts, English, Human Society and its environment (incorporating History and Geography), Mathematics, Personal Development, Health and Physical Education and Science and Technology.

In an effort to improve our reporting structure there will be a greater emphasis on using plain English rather than an excessive amount of educational jargon. We will also provide information to parents on areas for future development in English and Mathematics. During Term 3, we will survey our families, seeking feedback on how we can continue to improve on our reporting structures. Reports will be sent home in week 9. Parent teacher interviews will be held in Week 10. Further information will be sent to families in the coming weeks.

## NCCD-NATIONALLY CONSISTENT COLLECTION OF DATA ON SCHOOL STUDENTS WITH DISABILITY

Our school, along with all other schools in Australia, is again participating in the collection of nationally consistent data on school students with a disability in 2019. We will be collating information already available in the school about the support that is being provided to students with a disability. Better data will help the Australian Government plan for students with disability. The data collection will have no direct impact on your child, they will not be involved in any testing process and will not be aware that they have been counted in the collection. The NSW Department of Education will ensure that no individual student or school will be able to be identified. In this way, we will ensure the privacy and confidentiality of all students. All information is protected by privacy laws, which regulate the collection, storage and disclosure of personal information. Further information about the data collection can be found on the Australian Government Department of Education website: <http://education.gov.au/nationally-consistent-collection-data-schoolstudents-disability>

## YEAR 5 ENTRY TO AN OPPORTUNITY CLASS IN 2020



**For children currently in Year 4 ONLY.**

Application for Year 5 opportunity class entry in 2020 opened on **Tuesday 30 April 2019** and closes on **Friday 17 May 2019**.

Parents must apply by the due date and must apply online at: <https://education.nsw.gov.au/publicschools/selective-high-schools-andopportunity-classes/year-5>

If you require any assistance please contact the school office or Assistant Principal- Mr Seeney.

## Celebrate Attendance

Hints and Tips No. 4: Good Attendance



There are a number of sound reasons for you to ensure that your child attends school regularly.

Firstly, attending school every day makes learning easier. For younger students, missing the basic skills often leads to learning problems later on and for older student's absenteeism often interferes with academic progress. Friendships with other students are also easier if your child attends school regularly.

The law in NSW states that all children between the ages of 6 and 15 years are required to attend school. Sickness or injury, attendance at a special religious ceremony or a serious family situation are satisfactory reasons for non-attendance. Please let the school know why your child is not at school and provide an explanation on your child's return to school.

Birthdays, haircuts, pension days, Mondays etc are not satisfactory reasons for absence from school. Also try whenever possible to arrange your holidays in school vacation times.

Please contact your school principal if you need any help or have any questions.



Missing school leaves gaps in your education

## LIVE, LIFE, WELL

Each newsletter there will be practical tips and advice of how we can be healthier from *Live Life Well @ School*.



### Active tips for busy families

- ❖ make time to be active as a whole family
- ❖ go out and play basketball, tag or soccer, throw a ball or ride a bike with your children
- ❖ meet friends or family in a park and take balls, hoops, Frisbees, bats or other outdoor games to play.
- ❖ Set a limit on television watching, computer time and video games to no more than 2 hours a day.

# How to install the SkoolBag app

instructions for parents and community

1. Get your favourite mobile device
2. Open the App Store/Play Store
3. Search for "SkoolBag"
4. Download the free app
5. Open the app and add your school(s)

for Apple users



for Android users



for more info visit [skoolbag.com.au](http://skoolbag.com.au)



## The Grange Public School Award System

5 Grange Grinners	1 Merit Certificate
5 Merit Certificates	1 Principal's Award
2 Principal's Awards	The Grange Achievement Award
3 Principal's Awards	P&C Award
4 Principal's Awards	Bronze Ribbon
6 Principal's Awards	Silver Ribbon
8 Principal's Awards	Gold Ribbon
10 Principal's Awards	Bronze Medallion
12 Principal's Awards	Silver Medallion
14 Principal's Awards	Gold Medallion
16 Principal's Awards	Grange Cup



### **Busy Bees SPS Top Tip: Encouraging language during mealtimes**

Going out for a meal with the family at a restaurant or café is an excellent opportunity to develop speaking and listening skills. Here are a few ways you can do this:

#### **Conversation with the staff**

- Model and encourage your child to greet the staff at the venue.
- Engage in conversation with the wait staff and model turn taking and asking questions

#### **Looking at the menu:**

- Look at the menu together with your child
- Read the items on the menu out loud, if they can't read yet
- Talk about the meal you are all going to order
  - The name of the meal
  - What it might look like
  - How you think it might taste
  - What colour you might see on the plate?
- Look at the writing on the menu and point out the letters and numbers (younger children)
- Practice ordering the meal with your child.
- Think of some questions you may need to ask or special requests you need to make.

#### **Ordering:**

- Model the task of ordering a meal
- Encourage your child to order their meal for themselves as this prepares them for a lifelong skills
- Support your child to order their meal when the waiter comes, step in or step back as needed.
- Praise your child for their efforts.

#### **Meal-time:**

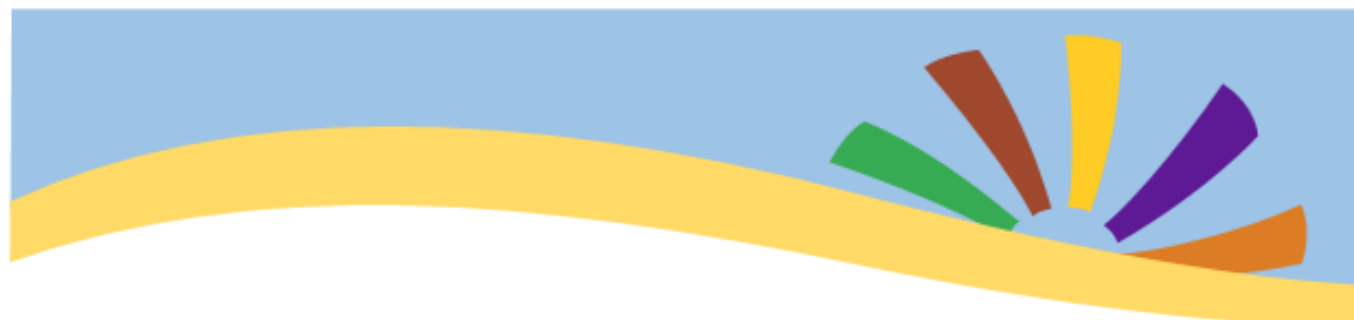
- Now that the food has arrived, you can talk about:
  - Whether it looks or tastes as you expected
  - Rate the meal on a scale of 1-10 (encourages your child to give an opinion)
  - Ask your child to explain why they gave it that rating.

If you have any specific questions or requests for tips, please send them through to [info@bbsps.com.au](mailto:info@bbsps.com.au)

Thank you,

Dania





# Start Right.



- \* MDSI will be running an educational program based on early years learning, literacy and numeracy for children ages 0-3 years. This program will be ran at A B Central every **Wednesday mornings 9:00am - 11am** each week during school terms in the school hall. Educational programs will be set up for the children to explore and discover each week along with a nutritional morning tea to start the day.



**Starting Wednesday 8th May 2019.**

**The Grange Public School Hall  
8 Benham Rd Minto 2566**

E. Vanessa Slattery@mdsi.org.au  
M. 0409 044 941



# MATHS CORNER



How can I help my child at home with Maths?

## Lower primary students:

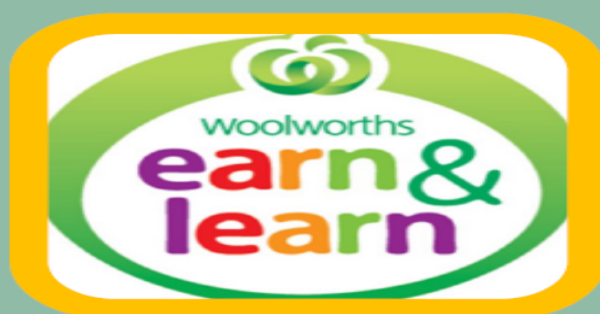
- Identify and explain visual patterns on clothing, wrapping paper and furniture.
- Encourage your child to draw, create and describe their own patterns. Use them for borders or greeting cards or on material.
- Build a tower of blocks that is taller than a favourite toy. Ask your child to count the total blocks to measure the height of the tower.
- Use a wall measuring chart to measure the height of people in your family.

## Upper primary students:

- How does your favourite sport tally the score? What maths is presented on the tally?
- How do other sports tally the score, for example, tennis, golf, cricket, netball, football?
- Can you identify your starting point on a bus/train timetable?
- What is the earliest and latest time to travel on this route? What is the difference?
- How long does it take to travel the entire route?

## **Woolworths Earn & Learn**

**Starting 1 May**



The Woolworths earn and learn initiative begins TODAY. The program gives schools the chance to earn amazing resources by collecting the tokens when making a purchase at Woolworths. Any tokens collected would be greatly appreciated and may be dropped in at the office or given to your child's class teacher. We will have a box at Woolworths Minto!

Don't forget to ask family relatives to help you collect the tokens too!

**Start collecting from TODAY!**

*The Grange Public School*

**THURSDAY 9TH MAY**



**STALL**

**Gifts from 50c to \$8**

**Please send your child with a plastic bag.**

*The Grange Public School*

**Wednesday  
22nd May 2019**



**DAY**

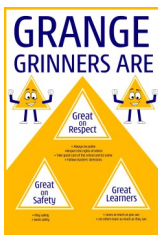
**Slice of Pizza & Popper \$4.00**

**Extra slice of pizza \$3.00**

**Extra popper \$1.00**

**Money due back no later than Tuesday 21/05/19**

# Congratulations To Our Awards Recipients



## P & C Award

Lucian David

Taylorann Matthews

Leon D'Emauele

## Silver Ribbon

Bronson Heath

## Grange Achievement Award

Leon D'Emauele

## Bronze Award

Charli Armstrong

Zunariah Ralman

## Silver Medallion

Thomas Draper

## Principal Award

Tulino Apelu

Thomas Drapper

Malak Fraoucne

Hanine Fraoucene



# CALENDAR TERM 2 - 2019

Week	Monday	Tuesday	Wednesday	Thursday	Friday
2	<b>6<sup>th</sup> May</b> Parent Social Group [PSG] Community Room 9:00 - 10:00am	<b>7<sup>th</sup> May</b> Breakfast Club GRAND OPENING 8:30am	<b>8<sup>th</sup> May</b> Sport in Schools K-2 students 2:00 - 3:00pm  Play Group HALL 9.30am - 11.00am	<b>9<sup>th</sup> May</b> School Banking  P & C MOTHER'S DAY STALL	<b>10<sup>th</sup> May</b> Whole School Assembly 9:00am  P & C Meeting LIBRARY 10:00am  Years 3-6 Sport
3	<b>13<sup>th</sup> May</b> Parent Social Group [PSG] Community Room 9:00 - 10:00am	<b>14<sup>th</sup> May</b>	<b>15<sup>th</sup> May</b> Sport in Schools 3-6 students 2:00 - 3:00pm  Years K-2 Sport  Play Group HALL 9.30am - 11.00am	<b>16<sup>th</sup> May</b> School Banking	<b>17<sup>th</sup> May</b> Years 3-6 Sport  <b>18<sup>th</sup> May</b> Saturday ELECTION BBQ
4	<b>20<sup>th</sup> May</b> Parent Social Group [PSG] Community Room 9:00 - 10:00am	<b>21<sup>st</sup> May</b>	<b>22<sup>nd</sup> May</b> P & C PIZZA DAY  Sport in Schools K-2 students 2:00 - 3:00pm  Play Group HALL 9.30am - 11.00am	<b>23<sup>rd</sup> May</b> School Banking	<b>24<sup>th</sup> May</b> Whole School Assembly 9:00am  Community Information Session [CIS] Lesley Nauta LIBRARY 10:00am  Zone Cross Country  Years 3-6 Sport
5	<b>27<sup>th</sup> May</b> Parent Social Group [PSG] Community Room 9:00 - 10:00am	<b>28<sup>th</sup> May</b>	<b>29<sup>th</sup> May</b> Sport in Schools 3-6 students 2:00 - 3:00pm  K-2 Sport  Play Group HALL 9.30am - 11.00am	<b>30<sup>th</sup> May</b> School Banking	<b>31<sup>st</sup> May</b> GALA DAY
6	<b>3<sup>rd</sup> June</b> Parent Social Group [PSG] Community Room 9:00 - 10:00am	<b>4<sup>th</sup> June</b> P & C Meeting LIBRARY 6:00pm	<b>5<sup>th</sup> June</b> P & C Sausage Sizzle  Sport in Schools K-2 students 2:00 - 3:00pm  Play Group HALL 9.30am - 11.00am	<b>6<sup>th</sup> June</b> School Banking	<b>7<sup>th</sup> June</b> Whole School Assembly 9:00am  Community Information Session [CIS] Lesley Nauta LIBRARY 10:00am  SPORTS DAY MUFTI  Years 3-6 Sport

# CALENDAR TERM 2 - 2019

Week	Monday	Tuesday	Wednesday	Thursday	Friday
7	<b>10<sup>th</sup> June</b> Parent Social Group [PSG] Community Room 9:00 - 10:00am	<b>11<sup>th</sup> June</b>	<b>12<sup>th</sup> June</b> Sport in Schools 3-6 students 2:00 - 3:00pm  K-2 Sport  Play Group HALL 9.30am - 11.00am	<b>13<sup>th</sup> June</b> School Banking  SSW Cross Country Carnival	<b>14<sup>th</sup> June</b> GALA DAY
8	<b>17<sup>th</sup> June</b> Parent Social Group [PSG] Community Room 9:00 - 10:00am	<b>18<sup>th</sup> June</b>	<b>19<sup>th</sup> June</b> P & C PIZZA DAY  Sport in Schools K-2 students 2:00 - 3:00pm  Play Group HALL 9.30am - 11.00am	<b>20<sup>th</sup> June</b> School Banking	<b>21<sup>st</sup> June</b> Whole School Assembly 9:00am  Community Information Session [CIS] Lesley Nauta LIBRARY 10:00am  Years 3-6 Sport
9	<b>24<sup>th</sup> June</b> Parent Social Group [PSG] Community Room 9:00 - 10:00am	<b>25<sup>th</sup> June</b>	<b>26<sup>th</sup> June</b> Sport in Schools 3-6 students 2:00 - 3:00pm  K-2 Sport  Play Group HALL 9.30am - 11.00am	<b>27<sup>th</sup> June</b> School Banking	<b>28<sup>th</sup> June</b> GALA DAY  <b>29<sup>th</sup> June</b> Saturday BUNNINGS BBQ
10	<b>1<sup>st</sup> July</b> Parent Social Group [PSG] Community Room 9:00 - 10:00am	<b>2<sup>nd</sup> July</b> RESPONSIBLE PET SHOW Years K-2	<b>3<sup>rd</sup> July</b> POSSUM MAGIC EXCURSION Darling Harbour Years 1-3  Sport in Schools K-2 students 2:00 - 3:00pm  Play Group HALL 9.30am - 11.00am	<b>4<sup>th</sup> July</b> School Banking	<b>5<sup>th</sup> July</b> PARTY DAY  Years 3-6 Sport